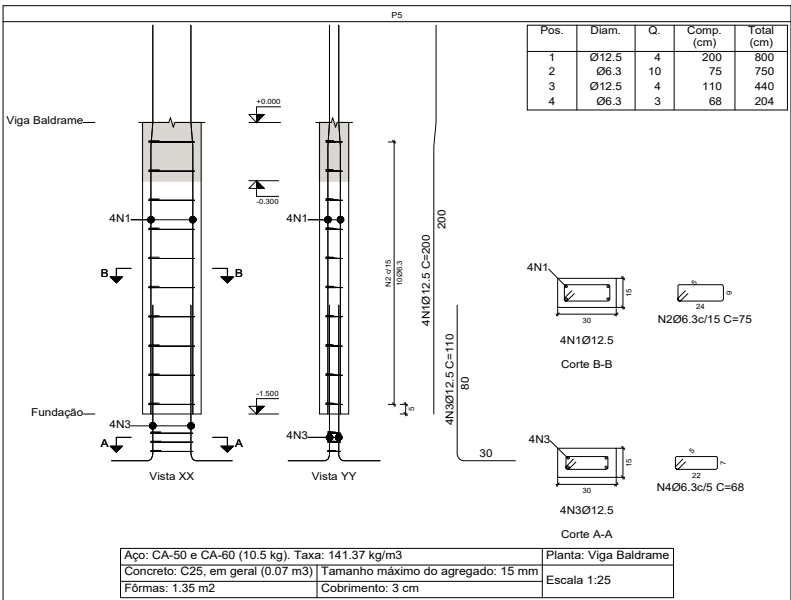
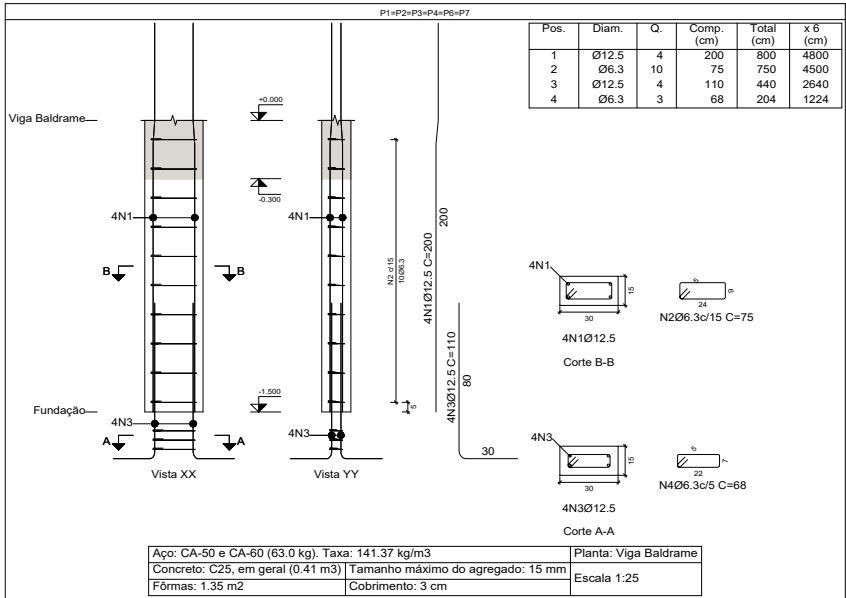


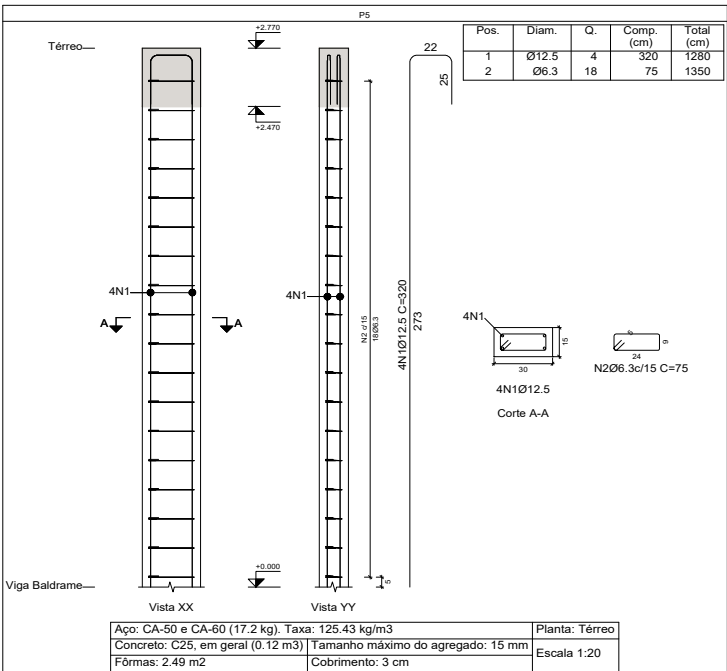
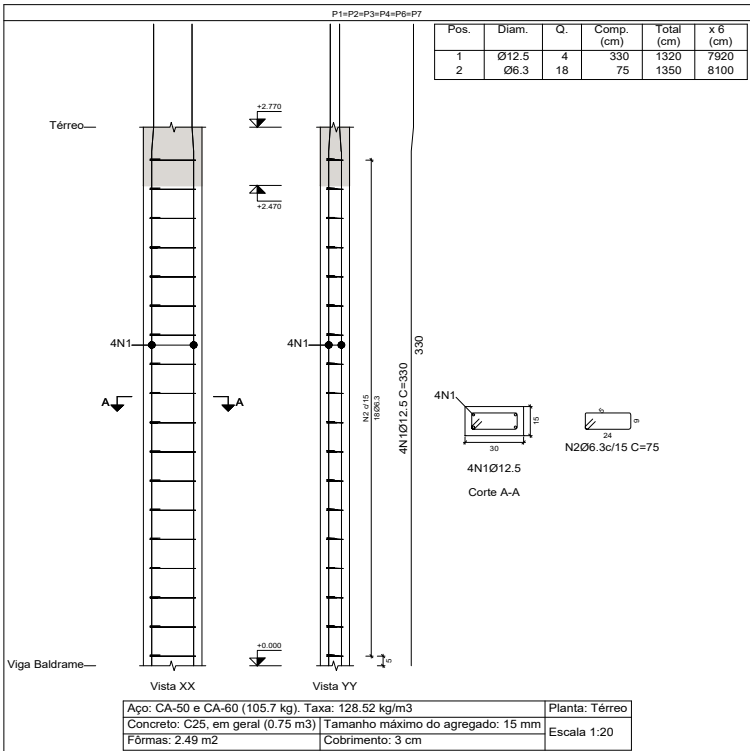
Planta: Vigla Baldrame
Concreto: C25, em geral
Aço das barras: CA-50 e CA-60
Aço dos estribos: CA-50 e CA-60

Elemento	Pos.	Diam.	Q.	Esquema (cm)	Comp. (cm)	Total (cm)	CA-50 (kg)	CA-60 (kg)
P1+P2+P3+P4+P6 P7	1	Ø12.5	4		200	800	7.7	
	2	Ø6.3	10		75	750	1.8	
	3	Ø12.5	4		110	440	4.2	
	4	Ø6.3	3		68	204	0.5	
Total:						14.2 (kg)	86.2	
P5	1	Ø12.5	4		200	800	7.7	
	2	Ø6.3	10		75	750	1.8	
	3	Ø12.5	4		110	440	4.2	
	4	Ø6.3	3		68	204	0.5	
Total:						14.2 (kg)	86.2	
						Ø6.3: 16.1	0.0	0.0
						Ø12.5: 83.3	0.0	0.0
						Total:	99.40	0.0



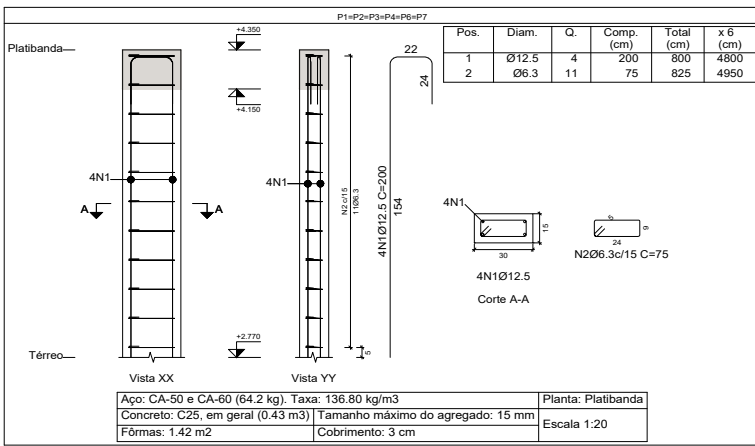
Planta: Térreo
Concreto: C25, em geral
Aço das barras: CA-50 e CA-60
Aço dos estribos: CA-50 e CA-60

Elemento	Pos.	Diam.	Q.	Esquema (cm)	Comp. (cm)	Total (cm)	CA-50 (kg)	CA-60 (kg)
P1+P2+P3+P4+P6 P7	1	Ø12.5	4		330	1320	12.7	
	2	Ø6.3	18		75	1350	3.3	
Total:						18.0 (kg)	96.0	
P5	1	Ø12.5	4		320	1280	12.3	
	2	Ø6.3	18		75	1350	3.3	
Total:						15.6 (kg)	78.6	
						Ø6.3: 23.1	0.0	0.0
						Ø12.5: 88.5	0.0	0.0
						Total:	111.6	0.0



Planta: Platlbanda
Concreto: C25, em geral
Aço das barras: CA-50 e CA-60
Aço dos estribos: CA-50 e CA-60

Elemento	Pos.	Diam.	Q.	Esquema (cm)	Comp. (cm)	Total (cm)	CA-50 (kg)	CA-60 (kg)
P1+P2+P3+P4+P6 P7	1	Ø12.5	4		200	800	7.7	
	2	Ø6.3	11		75	825	2.0	
Total:						9.70 (kg)	58.2	
						Ø6.3: 0.0	0.0	0.0
						Ø12.5: 12.0	0.0	0.0
						Ø12.5: 46.2	0.0	0.0
						Total:	58.2	0.0



Quadro de pilares
Escala 1:50
Concreto: C25, em geral
Aço das barras: CA-50 e CA-60
Aço dos estribos: CA-50 e CA-60

Elemento	Pos.	Diam.	Q.	Comp. (cm)	Total (cm)	CA-50 (kg)	CA-60 (kg)
P1+P2+P3+P4+P6 P7	1	Ø12.5	4	200	800	7.7	
	2	Ø6.3	11	75	825	2.0	
Total:						9.70 (kg)	58.2
P5	1	Ø12.5	4	200	800	7.7	
	2	Ø6.3	11	75	825	2.0	
Total:						9.70 (kg)	58.2

Resumo Aço	Comp. total (m)	Peso (kg)	Total
CA-50	210.8	51.20	
CA-60	226.8	218	269.2

REALIZAÇÃO: **CIAPRA**

ENDEREÇO: RUA EUVALDO LUZ, 527, ORLA FLUVIAL DE TAPEROÃ

PROJETO: PROJETO ESTRUTURAL - QUIOSQUE

TÍTULO DA PLANTA: PLANTA BAIXA, LOCAÇÃO + DETALHES

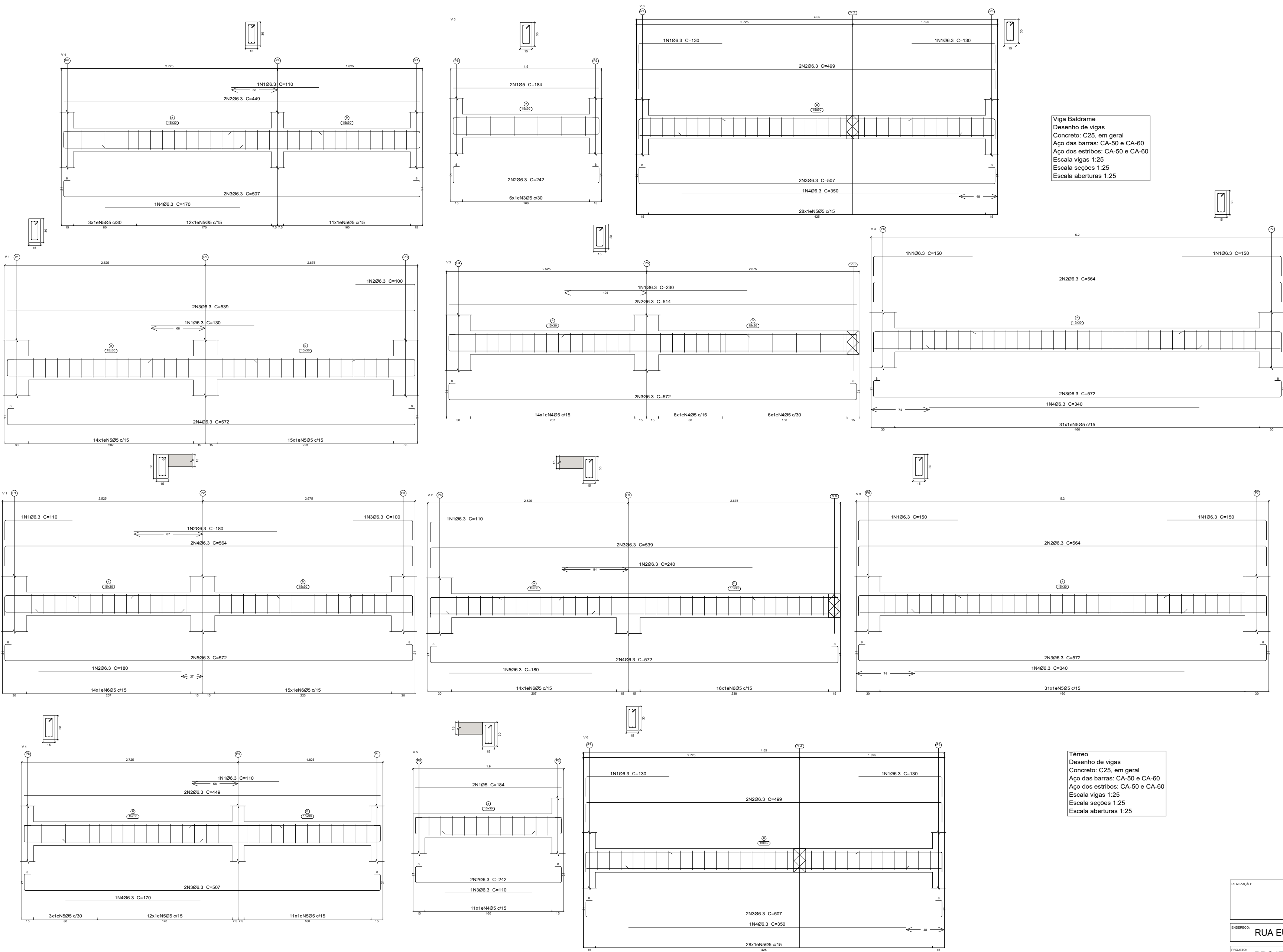
DATA: SET/24

ESCALA: 1/25

RESPONSÁVEL TÉCNICO: HERÁCLITO JÚNIOR FERREIRA QUEIROZ

DESENHO: MARIANA LIRA QUEIROZ

01



Elemento	Pos.	Diam.	Q.	Esquema (cm)	Comp. (cm)	Total (cm)	CA-50 (kg)	CA-60 (kg)
V 1	1	Ø6.3	1		130	130	0.3	
	2	Ø6.3	1		100	100	0.2	
	3	Ø6.3	2		539	1078	2.6	
	4	Ø6.3	2		572	1144	2.8	
	5	Ø5	29		74	2146		3.4
Total:							5.9	3.4
V 2	1	Ø6.3	1		230	230	0.6	
	2	Ø6.3	2		514	1028	2.5	
	3	Ø6.3	2		572	1144	2.8	
	4	Ø5	26		74	1924		3.0
Total:							5.9	3.0
V 3	1	Ø6.3	2		150	300	0.7	
	2	Ø6.3	2		564	1128	2.8	
	3	Ø6.3	2		572	1144	2.8	
	4	Ø6.3	1		340	340	0.8	
	5	Ø5	31		74	2294		3.6
Total:							7.1	3.6
V 4	1	Ø6.3	1		110	110	0.3	
	2	Ø6.3	2		449	898	2.2	
	3	Ø6.3	2		507	1014	2.5	
	4	Ø6.3	1		170	170	0.4	
	5	Ø5	26		74	1924		3.0
Total:							5.4	3.0
V 5	1	Ø5	2		184	368		0.6
	2	Ø6.3	2		242	484	1.2	
	3	Ø5	6		74	444		0.7
	Total:						1.2	1.3
V 6	1	Ø6.3	2		130	260	0.6	
	2	Ø6.3	2		499	998	2.4	
	3	Ø6.3	2		507	1014	2.5	
	4	Ø6.3	1		350	350	0.9	
	5	Ø5	28		74	2072		3.3
Total:							6.4	3.3
Ø5:							0.0	17.6
Ø6.3:							31.9	0.0
Total:							31.9	17.6

Elemento	Pos.	Diam.	Q.	Esquema (cm)	Comp. (cm)	Total (cm)	CA-50 (kg)	CA-60 (kg)
V 1	1	Ø6.3	1		110	110	0.3	
	2	Ø6.3	2		180	360	0.9	
	3	Ø6.3	1		100	100	0.2	
	4	Ø6.3	2		564	1128	2.8	
	5	Ø6.3	2		572	1144	2.8	
	6	Ø5	29		74	2146		3.4
Total:							7.0	3.4
V 2	1	Ø6.3	1		110	110	0.3	
	2	Ø6.3	1		240	240	0.6	
	3	Ø6.3	2		539	1078	2.6	
	4	Ø6.3	2		572	1144	2.8	
	5	Ø6.3	1		180	180	0.4	
	6	Ø5	30		74	2220		3.5
Total:							7.1	3.6
V 3	1	Ø6.3	2		150	300	0.7	
	2	Ø6.3	2		564	1128	2.8	
	3	Ø6.3	2		572	1144	2.8	
	4	Ø6.3	1		340	340	0.8	
	5	Ø5	31		74	2294		3.6
Total:							7.1	3.6
V 4	1	Ø6.3	1		110	110	0.3	
	2	Ø6.3	2		449	898	2.2	
	3	Ø6.3	2		507	1014	2.5	
	4	Ø6.3	1		170	170	0.4	
	5	Ø5	26		74	1924		3.0
Total:							5.4	3.0
V 5	1	Ø5	2		184	368		0.6
	2	Ø6.3	2		242	484	1.2	
	3	Ø6.3	1		110	110	0.3	
	4	Ø5	11		74	814		1.3
Total:							1.5	1.3
V 6	1	Ø6.3	2		130	260	0.6	
	2	Ø6.3	2		499	998	2.4	
	3	Ø6.3	2		507	1014	2.5	
	4	Ø6.3	1		350	350	0.9	
	5	Ø5	28		74	2072		3.3
Total:							6.4	3.3
Ø5:							0.0	18.1
Ø6.3:							34.1	0.0
Total:							34.1	18.1

REALIZAÇÃO:

ENDEREÇO:

RUA EUVALDO LUZ, 527, ORLA FLUVIAL DE TAPEROÁ

PROJETO:

PROJETO ESTRUTURAL - QUIOSQUE

TÍTULO DA PLANTA:

PLANTA BAIXA, LOCAÇÃO + DETALHES

DATA:

SET/24

ESCALA:

1/25

RESPONSÁVEL TÉCNICO:

HERÁCLITO JÚNIOR FERREIRA QUEIROZ

VISTO:

FRANQUIA:

DESENHO:

MARIANA LIRA QUEIROZ

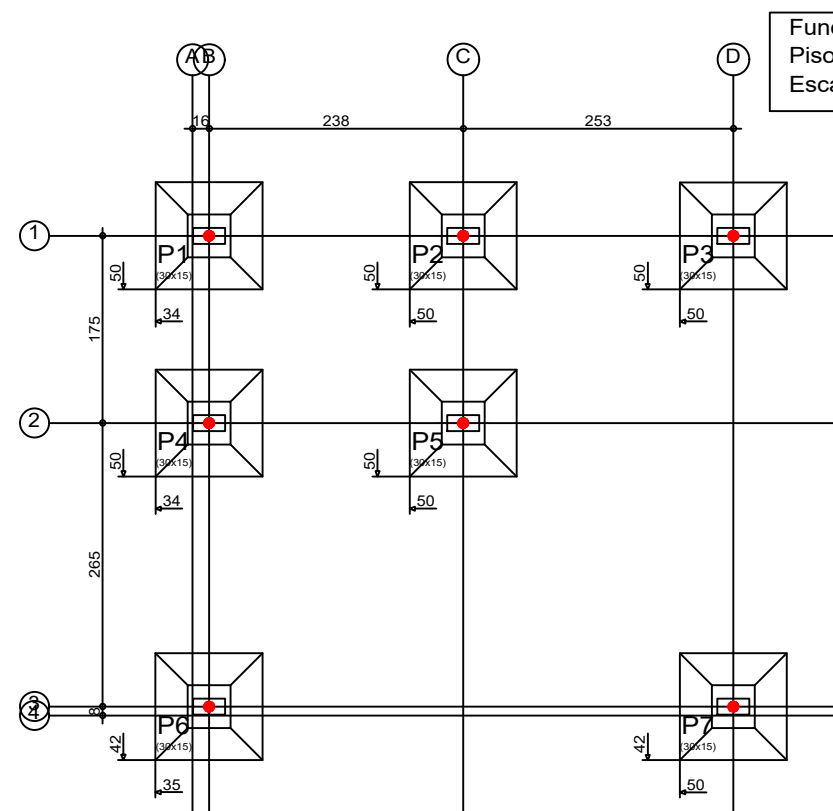
02

Figure 10 shows four cross-sections of a bridge deck, labeled (a), (b), (c), and (d). Each section is a rectangular cross-section with a width of 1.00 m. The sections are shown with reinforcement details, including stirrups and longitudinal bars. The sections are labeled with dimensions and reinforcement details.

- (a) Section with a width of 1.00 m. The reinforcement consists of stirrups and longitudinal bars. The section is labeled with dimensions and reinforcement details.
- (b) Section with a width of 1.00 m. The reinforcement consists of stirrups and longitudinal bars. The section is labeled with dimensions and reinforcement details.
- (c) Section with a width of 1.00 m. The reinforcement consists of stirrups and longitudinal bars. The section is labeled with dimensions and reinforcement details.
- (d) Section with a width of 1.00 m. The reinforcement consists of stirrups and longitudinal bars. The section is labeled with dimensions and reinforcement details.

[illegible]

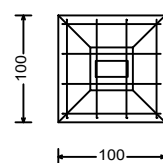
Térreo - Superfície total: 7,49 m ²			
Elemento	Formas (m ²)	Volums (m ³)	Genios (kg)
L.A.R.T.S	3,68	0,28	
Vigas: fundo	3,49	1,19	5
Forma lateral	12,91		
Placas (Sup. Formas)	15,54	0,77	12
Total	35,62	2,24	17



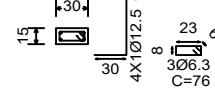
The diagram shows a square grid with nodes P1 through P7 and V1 through V4. The grid is defined by horizontal and vertical lines. Horizontal dimensions are 238 and 253. Vertical dimensions are 175 and 265. Nodes are labeled with coordinates like (30x15). Edges are labeled with values like 'a: 15/20' and 'b: 15/20'. Red squares indicate specific nodes or edges.

P1, P2, P3, P4, P5, P6 e P7

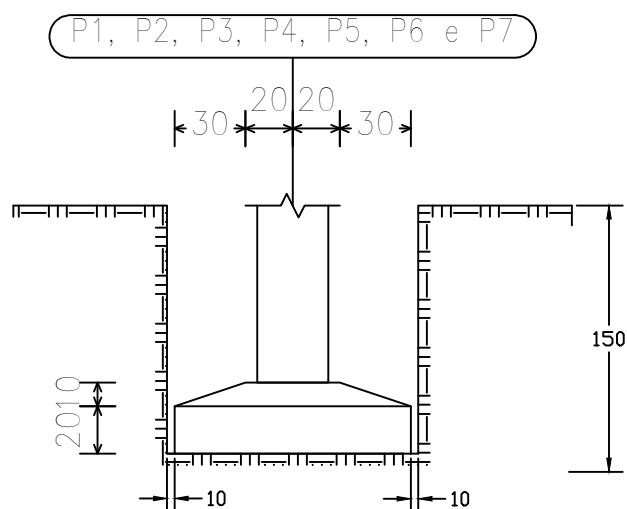
Technical drawing of a vertical support structure. The drawing shows a base plate with a central vertical column. The column has a diameter of 40 mm and a height of 120 mm. The base plate has a width of 30 mm. The column is supported by a base plate with a width of 30 mm. The column is labeled with dimensions: 40x10c/28 C=92. The column is also labeled with dimensions: 20, 20, 30, 30, 120, 30. The column is also labeled with dimensions: P1, P2, P3, P4, P5, P6 e P7.



P1, P2, P3, P4, P5, P6 e P7



P1, P2, P3, P4, P5, P6 e P7



REALIZAÇÃO:



ENDEREÇO:

RUA EUVALDO LUZ, 527, ORLA FLUVIAL DE TAPEROÁ

PROJETO:

PROJETO ESTRUTURAL

TÍTULO DA
PLANTA:

DETALHAMENTO DE ESCAVAÇÃO

DATA:

ABR/24


ESCALA:

S/ESC.

RESPONSÁVEL
TÉCNICO:

HERÁCLITO JÚNIOR FERREIRA QUEIROZ

VISTO:


HERÁCLITO JÚNIOR FERREIRA QUEIROZ
CREA/BA 300022040
CREA-BA 300022040

PRANCHA:

01

DESENHO:

MARIANA LIRA QUEIROZ